



Placentia Founders Society

The Green Shingle

News from the Bradford House

Spring 2025

MEMBERSHIP DRIVE

JUNE



It's that time of year again when we ask the entire Placentia community to renew their commitment to the Bradford House or to become new members of the Placentia Founders Society. Dues collected contribute to the preservation of this historic home.

Renewal letters are in the mail with information as to how to go online to send dues. Also, supporters can send checks to the Bradford House address shown on the last page this newsletter. Various categories are available, so everyone can give their support at a comfortable level.

2025-26 PFS Executive Board Election and Annual Meeting

PFS members' Annual Meeting has a new format this year. Previously, a special program was planned for the annual meeting along with the election of new executive board members. Then activities at the Bradford House took a hiatus for the summer.

This year, however, we are in the midst of planning for our first community event sponsored by the Bal & Tina Maraj Family Foundation that will take place on Sunday, June 22. See adjacent article for details.

All PFS members are encouraged to attend the Annual Meeting on a slightly different date, on Tuesday, June 17 at 7pm and cast their vote for the proposed 2025-26 slate of executive officers:

President, Eric Holmgren; VP Activities, Panida Pawasittichot; VP Education, Nancy Murray; VP Curation, Wendy Elliott; Secretary, Kim Deweese; Treasurer, Michele Jones; Parliamentarian, Colson Teal.

The voting will be followed by light refreshments, then the current board will adjourn to their regular monthly meeting to finalize plans for the Sunday event.

Celebrate Volunteer Dedication on June 22

It takes dedication to see a project through to its end. It takes even more dedication to maintain the project and keep it alive after the initial enthusiasm fades.

Three especially dedicated volunteers to the Bradford House will be saluted on the fourth Sunday in June: Mary Castner, Bob Robinson and Tina Maraj.

The entire Placentia community is invited to a family friendly gala at Bradford Park on June 22, 1-4 p.m. There will be music, food trucks, and activities for everyone to enjoy. The Bradford House will be open for limited tours.

Mary Castner campaigned early on to save the house, served on the executive board and enjoyed hosting chamber music concerts for many years.

Bob Robinson's recent step into a board position saw him decorate for Halloween and Christmas events. He provided the helpful handyman touch when needed.

Tina served as president of the PFS from 2021-2023 after being active for many years in other capacities. Her involvement began at an early Haunted House.



The Bal & Tina Maraj Family Foundation was created to support various local charity organizations to which Tina Maraj had dedicated herself. Its generous gift to the Placentia Founders Society at the end of 2024 is supporting this event.

Plan to come and enjoy the fruits of such great dedication.

Upcoming Events:

- 6/8 Sunday Tour, 2-4 p.m.
- 6/17 Annual Meeting, 7 p.m.
- 6/22 Dedication Day, 1-4 p.m.
- 7/13 Sunday Tour, 2-4 p.m.

A Message From the President

by Eric Holmgren



For over 50 years the Placentia Founders Society has fulfilled its mission of preservation and education through the dedication of hundreds of individuals. Many of these folks have served as docents or board members. Many more have been folks in the community who have helped out at various events or service projects at the house.

The Bradford House is a fun and interesting place to volunteer! Before the pandemic, a typical docent served for an average of 12 years. Members of the board usually serve between 5 and 10 years. Most of the volunteers serve because they want to share the connection to our city's history with our fellow citizens and school children. Beyond this lofty principle, they also love the Bradford House. Common reactions are: it is "amazing" and "cool" and "beautiful". But the volunteers also enjoy the camaraderie with their fellow docents and board members. We have fun, we joke, we support each other.

Over time, our volunteers age out. They retire or move out of the area, or pass away. They did their part to support the organization. The current volunteers stand upon the shoulders of those who came before us. We continue their legacy and hope to leave the PFS in as good or better circumstances for the next generation of volunteers.

To recognize and honor our past volunteers, this year we are holding a new community event called "Dedication Day" to be held on June 22nd, 1-4pm. The event will be open to the entire Placentia community and feature music, ice cream, and activities for kids and families. Stay tuned for more details.



As Time Moves On

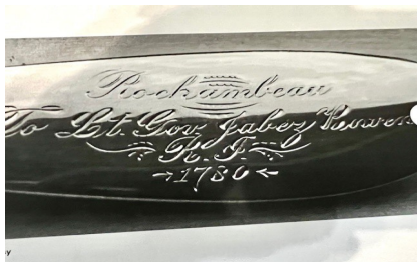
In March, the Placentia Founders Society lost a longtime Bradford House patron with the passing of Mary Castner. She and husband Lee were among the earliest volunteers who worked to open Bradford house to the public. Mary was a familiar hostess during the chamber music concert series. In March of 2023, Mary shared her recollections



of her earlier years in Placentia when she was interviewed by Wendy Elliott as part of our historic lecture series.

The Placentia Founders Society is saddened also to report the passing of board member Bob Robinson. Bob died suddenly in April of a heart attack. He had served for two years on the board. Bob was a civil engineer who brought his professionalism and expertise to issues of maintenance at the house. The board will miss his humor and wisdom.

New Bradford Family Memorabilia



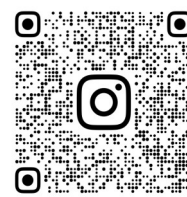
We are grateful to Irene (Rene) Bradford Kamin for donating several serving pieces to the Bradford House, items belonging to her family. These included a carving set and a beautiful vintage Gorham 1780 Reproduction serving spoon engraved with the following:

Rochambeau
To Lt. Gov. Jabez Bowen
R. F.
1780

During the Comte de Rochambeau's visit to Providence in 1780, he was the guest of Deputy Governor and Mrs. Jabez Bowen and gave them a silver stuffing spoon engraved with the Rochambeau coat of arms. The original is now in the Newport Historical Society collection.

UPDATE!!

Use this code to check for PFS news on Instagram



@PLACENTIAFOUNDERS

Rewards of LOVE PLACENTIA



Spiders fled and cobwebs fell before the enthusiastic efforts of teens earning community-service-hour credits toward graduation. Tarnish faded, windows glistened and carpets fluffed when twenty volunteers at the Love Placentia event came to polish, plant, and “pretty-fy” Bradford House and its adjacent gardens on May 3.

Many hands made light work and by noon the volunteers left knowing their efforts were much appreciated. Fannie and A. S. Bradford still rely on their Placentia neighbors for support.



Placentia Community Foundation Gift Benefited Students

It is difficult to sufficiently thank a community organization who has supported PYLUSD third-grade student tours of the Bradford House for nearly ten years. The Placentia Community Foundation (PCF) supports many community organizations including the Bradford House. Over the past schoolyear, the PCF's support mainly has funded transportation for schools too distant to walk to the house and for those schools that lack funds for transportation.

In addition, they have just funded us for the 2025-26 school year. We want to ensure that every third-grade classroom in the district has the opportunity to tour the Bradford House.

During the 2024-25 school year, with the support of the PCF, 735 third-grade students from 24 different classrooms have had an in-person, docent-led tour of the historic Bradford House.

They learned about the unique 123-year-old house itself, about the Bradford family and their contributions to our City, about the early citrus industry, and about life at the turn-of-the-century.



Informative and Entertaining February Presentation



Not only was the music nostalgic but the surprise treasures on display made the time of A. S. Bradford come into sharper detail.

CarolAnn Tassios, pianist and lecturer, discussed the music, composers and special events of the years from 1890 to about 1940, when Bradford lived in California. Her warm manner convinced everyone that they could indeed sing along to familiar tunes she played. Even if they weren't very well-known, they were familiar enough that joining in was possible and fun. CarolAnn also shared her personal collection of vintage sheet music where bold colors of yellow, orange and red reached out to grab the audience's attention.

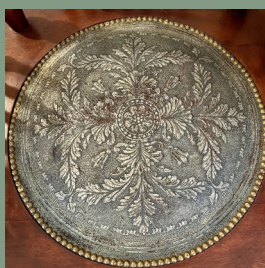
Docents Visit the OC Holocaust Museum



The Orange County Docent League met at the Orange County Holocaust Museum in April, and several of our docents attended the conference including Brenda Benner, Judie Dee, Pauline Rogers, Lorelee Page-Ortez, and Nancy Murray. It is a fairly new museum based on concentration camp artifacts collected and displayed as pieces of art by Mel Mermelstein, a resident of Orange County, who survived two WWII concentration camps. We heard from his daughter, Doris, and toured the museum. It was a moving experience, and we learned a great deal from their docents about how to build connections with guests during tours.



A New Artifact at Bradford House



A recent message from longtime member, Lynda Baker: "I'd like this beautiful early American cherrywood rocker to go in the Bradford House, if possible. It was in my great aunt's house in Lindsborg, Kansas. The seat is the original embossed leather."

El Dorado Students Create a Video of the Bradford House

Three students, Autumn Treister, Ari Mozaka and Bri Cunlo, from El Dorado High School's film production class visited the Bradford House in April to produce a video for a class



assignment. They interviewed our Vice-president of Education, Nancy Murray, and filmed items in the house. They will share the final production with us. We thank them for their interest and wish them luck on their grade!



Bradford House Mothers' Day Tea and Tour

It has been many years since we have hosted a Tea at the Bradford House. In those long-ago days, it was a large event held outside with big trees providing shade. We reintroduced this lovely tradition with a Mothers' Day Tea and Tour this May. It was held indoors utilizing many of the Bradford House's table settings and our Orange Blossom silverware.

The event began with a presentation on the history and proper etiquette of a Tea, a quintessential British tradition introduced in 1840 by Anna, the seventh Duchess of Bedford and one of Queen Victoria's ladies-in-waiting. Due to the spread of gas lighting in England, the evening meal was being served much later causing Anna to request that tea, bread and butter, and cake be brought to her room in the late afternoon. Soon this fashionable custom spread across Britain. In terms of Tea etiquette, did you know that sugar is to be placed in your cup first, that you are not to clink the sides of your cup while stirring your tea, or that eating with your fingers is acceptable?

Our Mothers' Day Tea this year was served in the dining room and included finger sandwiches, sweets, scones and several types of tea. Following the Tea, guests were given a docent-led tour of the Bradford House focusing on the early Bradford House women. Sincere thanks to all who assisted with the event and to our guests who were lovely to host. We hope to continue and expand this lovely Mothers' Day Tea and Tour in the future.





The Bradford House

136 Palm Circle
Placentia, CA 92870
Phone: 714-993-2470
E-mail: bradfordhse@yahoo.com
<https://thebradfordhouse.org>

* **Online readers** can pay membership fees by holding Control and clicking:

<https://thebradfordhouse.org/buy-membership/>

* **Readers of hard copy** can use the QR code below to reach the membership page on our web site.



* **Paper check lovers** can send this form with payment to the Palm Circle address shown above.

*** THANK YOU!! ***

Membership Renewals Due June 1

Thank you to our loyal members who have supported the Bradford House in the past. Our fiscal year begins on June 1. Membership renewals for 2025-26 are now due. *New members are most welcome.**

Name_____

Address_____

City/State/Zip_____

Individual \$30

Senior (65+) \$20

Student (full-time) \$10

Family/Dual \$50

Benefactor \$75

Patron \$125

Thank you! Your tax-deductible donation will help preserve the historic Bradford House for future generations.

The Placentia Founders Society was established in 1974 to preserve and maintain the Bradford House, which was built in 1902. Now it is a living museum, providing a glimpse into the lives of a pioneering family who made their fortune in the citrus industry. The House will open to the public for docent-led tours from 2-4 p.m. the second Sunday of each month.